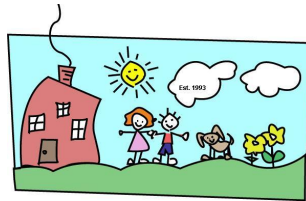


# CHRIST THE KING COMMUNITY DAYCARE / PRESCHOOL



## 2026 - 2027 MONTHLY TUITION RATES

### CHRIST THE KING COMMUNITY DAYCARE / PRESCHOOL

Per Week	Monthly Rates	Per Week	Monthly Rates
6HRS	\$572	25HRS	\$1,193
7HRS	\$615	26HRS	\$1,221
8HRS	\$655	27HRS	\$1,247
9HRS	\$687	28HRS	\$1,274
10HRS	\$728	29HRS	\$1,302
11HRS	\$769	30HRS	\$1,317
12HRS	\$788	31HRS	\$1,344
13HRS	\$831	32HRS	\$1,370
14HRS	\$871	33HRS	\$1,399
15HRS	\$882	34HRS	\$1,422
16HRS	\$918	35HRS	\$1,444
17HRS	\$954	36HRS	\$1,469
18HRS	\$1,007	37HRS	\$1,481
19HRS	\$1,043	38HRS	\$1,508
20HRS	\$1,060	39HRS	\$1,535
21HRS	\$1,082	40HRS	\$1,556
22HRS	\$1,116	45HRS	\$1,671
23HRS	\$1,149	50HRS	\$1,800
24HRS	\$1,172	55 HRS	\$1,876

#### Additional Fees and Discounts:

**Annual Insurance Fee: \$200 - Registration Fee: \$150 - Annual Re-Registration Fee: \$100 - Bag: \$15**

**One contract change per year, there will be a \$20 service charge for any there after.**

**Pre-K & 3-K students will receive a \$1,031.36 credit towards their monthly extended contract.**

**There is a 10% sibling discount on the oldest child.**

**Insurance and Registration are non-refundable. Half month security deposit required.**

**After a 5 min grace period there is an overtime charge of \$5 applied for every 15 minutes your child is dropped off before or picked up after their contracted hours.**

**Our center closes at 6pm.**

**If your child is picked up after 6:15pm, a \$25 late pick-up fee will be applied, in addition to our current overtime policy.**

**Tuition is billed on the 1st of the month. All parents are required to have a credit card or bank account on file.**

**Payments are processed on the 5th of the month.**

**If payment fails, you have to the 10th of the month to make a payment or a \$20 late fee will be added to your ledger.**

**If tuition is not paid by the 15th, your child may not be guaranteed a seat the following month.**

**For any families withdrawing, all balances must be paid by the 5th of the month in which you are withdrawing.**

**If not paid by the 5th, your child will not be able to attend Daycare until balance is paid.**

**Contracts are automatically renewed until 30 days written notice.**